

# **HOME WATER**

Not sure when to change your pre-filter?  
Give us a call!

CANADA: **1-800-408-5314**

USA: **1-855-464-9736**

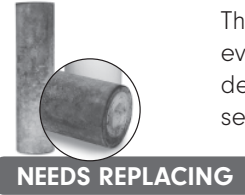
EMAIL: **customerservice@homewater.com**

WEB: **HOMEWATER.COM**



## WHOLE HOME PRE-FILTER

Replacement cartridge for Whole Home Sediment Pre-filter used to prevent dirt and sediment particles from entering and clogging the main filter unit.



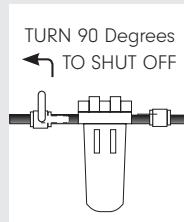
This cartridge should be replaced every six months to a year depending on water quality and sediment levels.

### PRE-FILTER REPLACEMENT STEPS

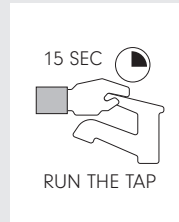


The entry valve **a** is located either  
1) on the PVC pipe connected to the pre-filter **b** or  
2) directly on the house line

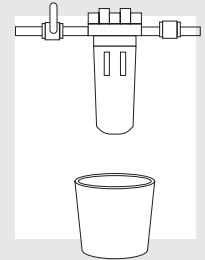
- 1) Locate and turn entry valve **a** 90 degrees to "off" position.



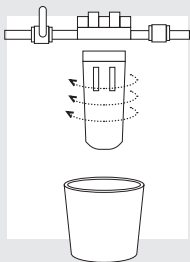
- 2) Relieve water pressure by letting the basement tap in the house run for 15 seconds.



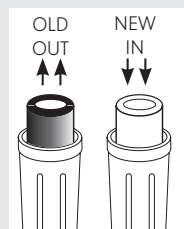
- 3) Place a bucket underneath the pre-filter **b**.



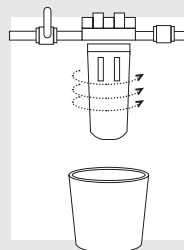
- 4) Unscrew the pre-filter cartridge **b** off.



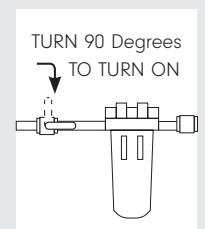
- 5) Take out the old pre-filter (do not dump it out as you may lose the rubber ring seal).



- 6) Put in the new pre-filter and screw cartridge **b** on.



- 7) Slowly open the entry valve **a** making sure the pre-filter cartridge **b** is connected well.



## MOVING SOON?

If you are moving or selling your home we have options for the transfer of your water filtration services.

**Call customer service** to arrange the transfer.